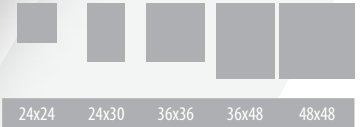




**FLAT ROOF
SKYLIGHTS
AND HATCHES**

DXW - walkable skylight

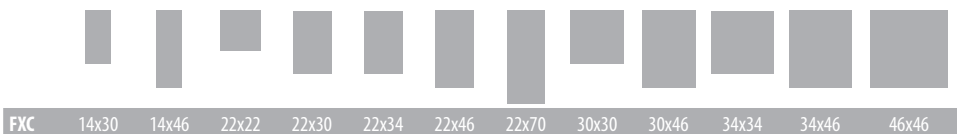


▶ CURB MOUNTED FIXED SKYLIGHT **FXC**

- Infinity glass - virtually seam-free flat surface
- 360-degree orientation on sloped or flat roof
- A modern, trouble-free design helps with water run-off.
- White finished, PVC frame interior
- Internal and external accessories available before or after skylight's installation.
- Suitable for roof with a pitch between 0-60 degrees

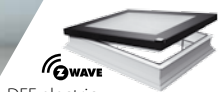


FXC

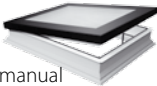




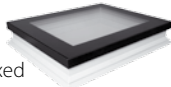
INVITE
THE LIGHT



DEF electric



DMF manual



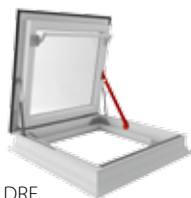
DXF fixed

FLAT ROOF WINDOWS **TYPE F**

- An abundance of natural light. The window's profile have a secure glazing area that is up to 16% greater than those of competitors.
- The frame of the flat roof window is constructed from multi-chamber PVC profiles filled with insulating material.
- The external glass is laminated reflecting the sun rays while the internal pane is anti-burglary Class P2A.
- In addition to standard sizes, the type F window is available in custom sizes (from 24"x24" to 48"x87") to suit many retrofits.
- High energy-efficient DU6 triple-pane glazing (U-value=0.12 BTU/h²F) and DU8 quadruple-pane glazing (U-value=0.11 BTU/h²F) to choose from.
- Windows can be fitted with internal and external blinds to ensure shade and protect interiors from overheating.



DEF, DMF, DXF	22x22	22x30	22x46	30x30	46x46
---------------	-------	-------	-------	-------	-------



DRF

FLAT ROOF ACCESS SKYLIGHT **DRF**

- Energy-efficient design using DU6 triple-pane glazing and insulated, multi-chamber PVC frame to achieve low U-value=0.13 BTU/h²F.
- Safe and convenient access to a flat roof. Specially-designed hinges and a gas springs keep the window open at 80 degrees.
- An anti-slip coating covers the exterior of the window for safe access to the flat roof.
- Excellent soundproofing performance
- Flat glass is impact resistant for durability.
- Window can be fitted with internal and external blinds to ensure shade and protect interiors from overheating.



DRF	30x30	30x36	36x36	36x48
-----	-------	-------	-------	-------



DRL

LML

ROOF HATCH **DRL**

- Energy-efficient design with insulated door and frame delivers U factor = 0.12 BTU/h²F
- Available sizes can be combined with FAKRO attic ladders for invisible access to the flat roof.
- Insulated, multi-chamber, PVC frame with a high-performance seal ensure the hatch is suitable for energy-efficient projects in a variety of climates.
- Gas spring-assisted opening stays open at 80 degrees.
- An anti-slip surface covers the base for safe access to the flat roof.



DRL	30x30	30x36	36x36	27 1/2 x 61 1/2
-----	-------	-------	-------	-----------------