

FXC G33

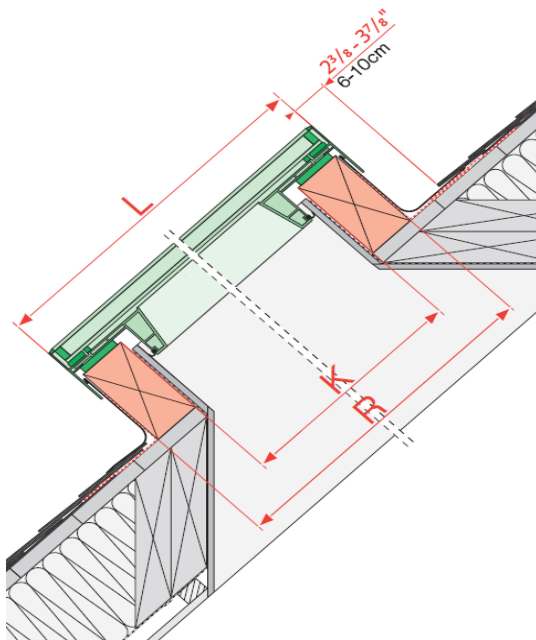
NON-OPENING CURB MOUNTED SKYLIGHT WITH DOUBLE GLAZING G33 UNIT

I. APPLICATION

Plastic window/skylight.

Parameter	Value/Type	Marking
Roof angle	0° - 14° 15° - 60° (with EL-C or EH-C)	0°-14° 15°-60°
Roofing base type	slate, roofing felt, bitumen, asphalt, roof tiles, profiled metal sheeting,	-

VI. ASSEMBLY INFORMATION



II. WINDOW SET ELEMENTS

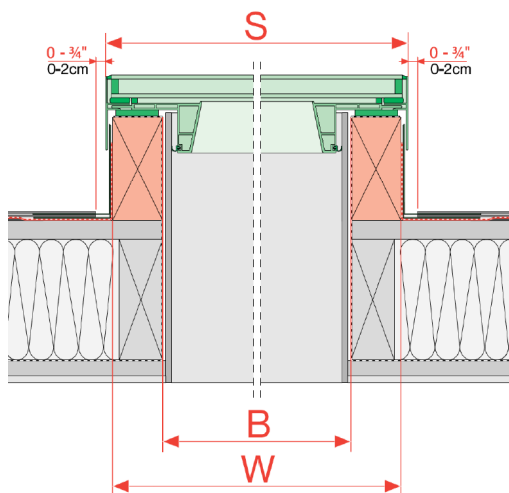
NO.	Element	Quantity	Description
1.	Sash equipped with glazing unit,	1	G33 – glazing unit with external glass toughened and internal glass laminated
2.	Assembly set	1	

III. SIZES

There are available 12 standard sizes.

FXC G32	Skylight width [in]				
	14	22	30	34	46
Skylight height [in]					
22					
30					
34					
46					
70					

Sizes: **Standard**



WxR is dimension of opening. W=B+3", R=K+3"

IV. TECHNICAL PARAMETERS

Parameter	Unit	Value	Rating
U-factor	[BTU/h ft²F]	0,46	NFRC 100
Solar Heat Gain Coefficient	-	0,22	NFRC 200
Visible Transmittance	-	0,42	NFRC 200
Condensation Resistance	-	62	NFRC 500
UV transmittance	%	0,3	EN 410-2011
Glazing unit		4HT-Tg16Ar-4H	
Simulation Result No		NS-02780-1 RD2	

VII. DETAILED SIZES

Window size	Frame external size	Inside curb	Outside curb	Maximum Skylight Clearmace	
	S x L	B x K	W x R	X x Y	
[in]	[in]				
14 x 30	19 1/4 x 35 1/4	14 1/2 x 30 1/2	17 1/2 x 33 1/2	19	35
14 x 46	19 1/4 x 51 1/4	14 1/2 x 46 1/2	17 1/2 x 49 1/2	19	51
22 x 22	27 1/4 x 27 1/4	22 1/2 x 22 1/2	25 1/2 x 25 1/2	27	27
22 x 30	27 1/4 x 35 1/4	22 1/2 x 30 1/2	25 1/2 x 33 1/2	27	35
22 x 34	27 1/4 x 39 1/8	22 1/2 x 34 1/2	25 1/2 x 37 1/2	27	39
22 x 46	27 1/4 x 51 1/4	22 1/2 x 46 1/2	25 1/2 x 49 1/2	27	51
22 x 70	27 1/4 x 75 1/8	22 1/2 x 70 1/2	25 1/2 x 73 1/2	27	75
30 x 30	35 1/4 x 35 1/4	30 1/2 x 30 1/2	33 1/2 x 33 1/2	35	35
30 x 46	35 1/4 x 51 1/4	30 1/2 x 46 1/2	33 1/2 x 49 1/2	35	51
34 x 34	39 1/8 x 39 1/8	34 1/2 x 34 1/2	37 1/2 x 37 1/2	39	39
34 x 46	39 1/8 x 51 1/4	34 1/2 x 46 1/2	37 1/2 x 49 1/2	51	27
46 x 46	51 1/4 x 51 1/4	46 1/2 x 46 1/2	49 1/2 x 49 1/2	51	51

