

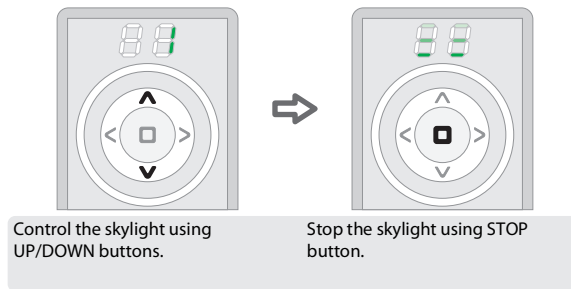
1



DEVICE OPERATION

The PDS, FVC-S skylight is factory-assigned to the first group of the ZRH12 remote control. Other groups remain inactive until devices are assigned to them.

CONTROL



Control the skylight using UP/DOWN buttons.

Stop the skylight using STOP button.

2

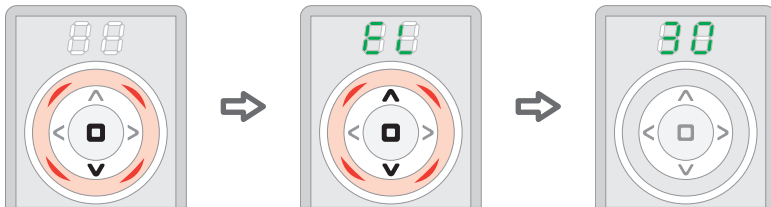


REPROGRAMMING

In the case of a control problem, first check if the skylight is correctly connected to the power source. This can be done using the control button on the skylight. If the skylight works manually by pressing the button on the control pad and the remote control problem still exists, the procedure below should be followed.

1a. SKYLIGHT RESET

This function deletes information about the assigned remote control in the skylight, enabling it to be added to the selected Z-Wave remote control again.



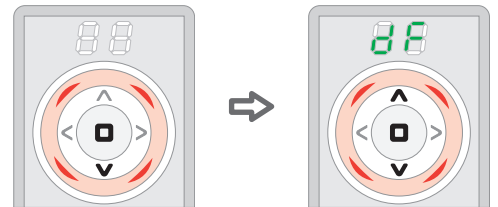
Hold STOP and DOWN buttons until you enter configuration mode.

Select **EL** function using UP/DOWN buttons and then accept it using STOP button.

Press programming button twice on the skylight within 30 seconds*.

1b. REMOTE CONTROL RESET

This function deletes all information from the remote control.

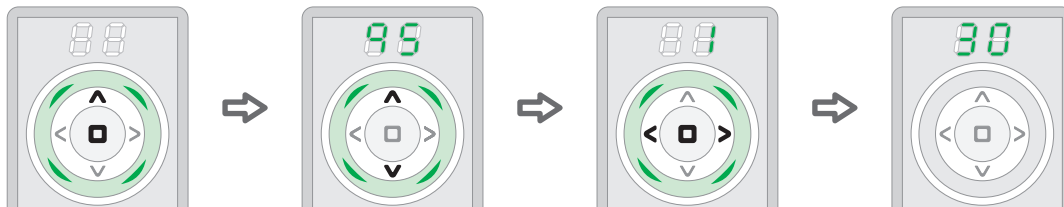


Hold STOP and DOWN buttons until you enter configuration mode.

Select **dF** function using UP/DOWN buttons and then accept it using STOP button.

2. ADDING SKYLIGHT TO REMOTE CONTROL

This function adds the skylight to the memory of the selected Z-Wave remote control to the selected group.



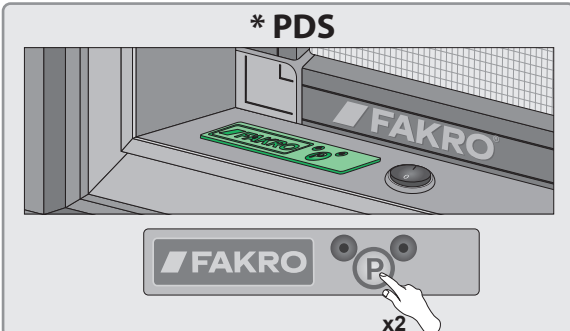
Hold STOP and UP buttons until you enter configuration mode.

Select **qs** function using UP/DOWN buttons.

Using LEFT/RIGHT buttons select the group to which you want to assign the skylight and then accept it using STOP button.

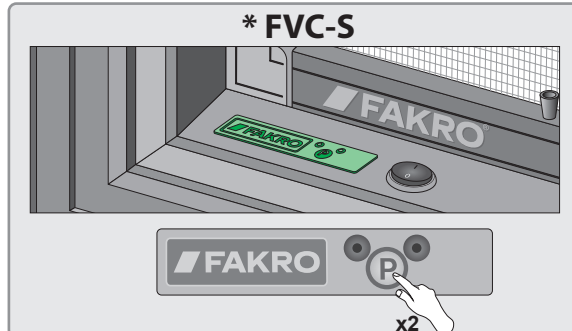
Press programming button twice on the skylight within 30 seconds*.

*** PDS**



x2

*** FVC-S**



x2

3

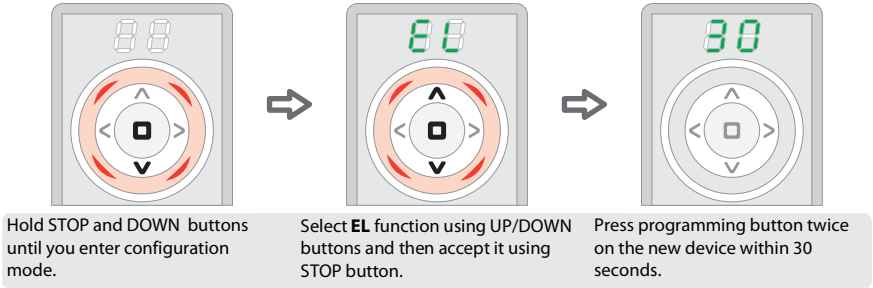


ADDING NEW DEVICE

If the user buys a new set in addition to the one he already has (skylight+remote control) and they want the new device to be assigned to the old remote control, the procedure below should be followed.

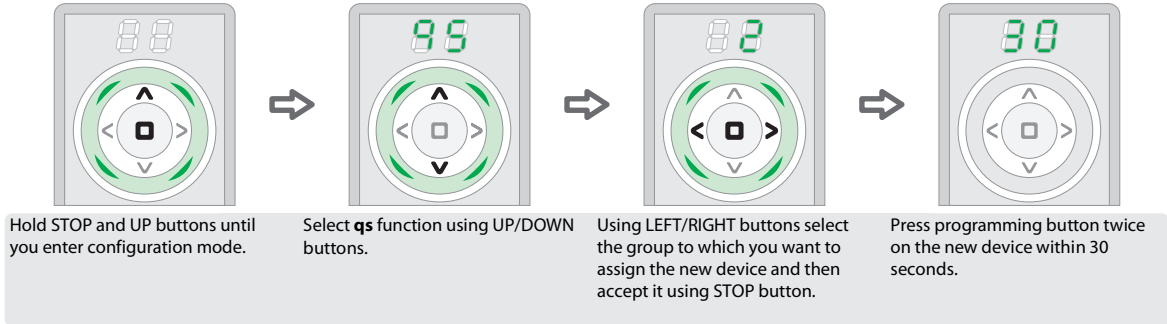
1. NEW DEVICE RESET (SKYLIGHT OR WINDOW BLIND)

This function deletes information about the assigned remote control in the new device, enabling it to be added to the selected Z-Wave remote control again.

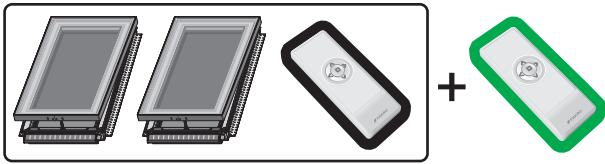


2. ADDING SKYLIGHT OR BLIND TO REMOTE CONTROL.

This function adds a new device to the memory of the selected Z-Wave remote control to the selected group.



4

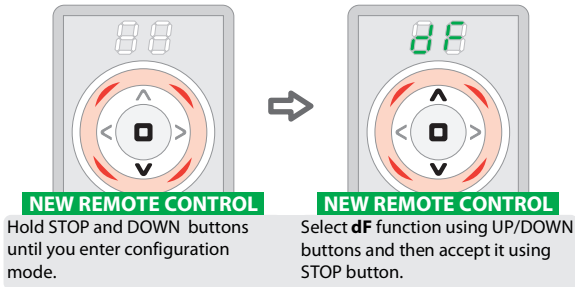


ADDING ANOTHER REMOTE CONTROL

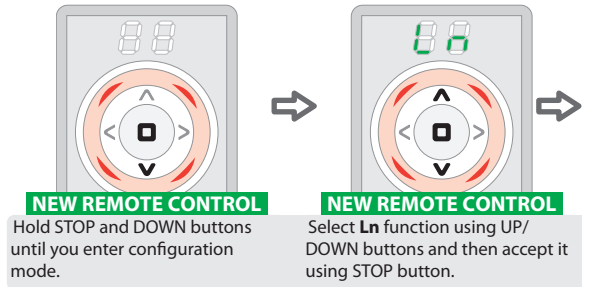
If the user wants to operate devices using new remote control, the procedure below should be followed.

1. NEW REMOTE CONTROL RESET

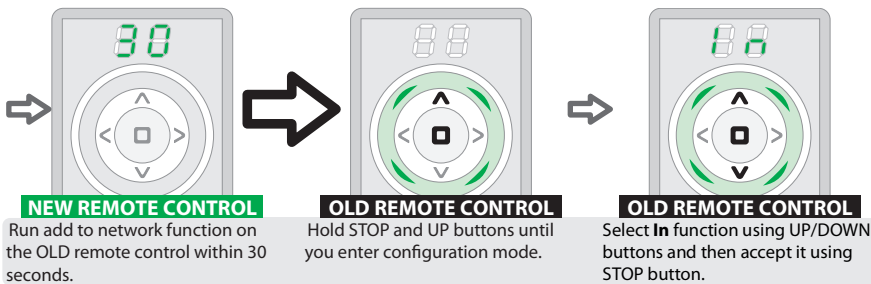
This function deletes all information from the remote control, enabling it to be added to another Z-Wave remote control.



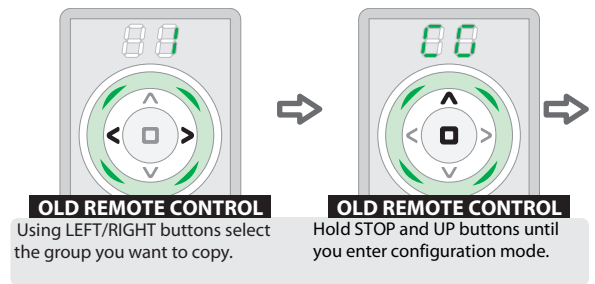
2a. ASSIGNING NEW REMOTE CONTROL TO THE OLD ONE



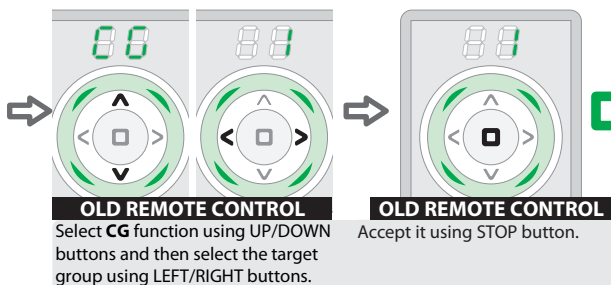
2b. ASSIGNING NEW REMOTE CONTROL TO THE OLD ONE



3a. COPYING A GROUP TO THE NEW REMOTE CONTROL



3a. COPYING A GROUP TO THE NEW REMOTE CONTROL



3b. COPYING A GROUP TO THE NEW REMOTE CONTROL

