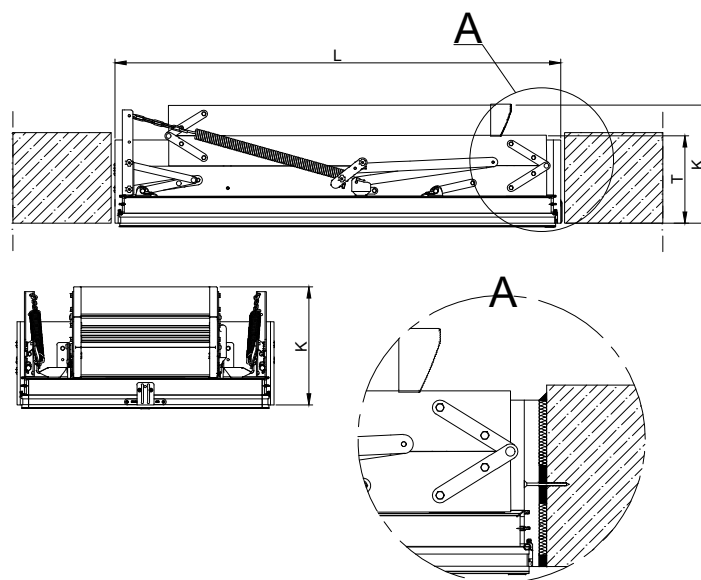


- 78-Spring
- 80-Tread
- 84-Thermo-insulated hatch
- 86-Hinge
- 88-Side bracket
- 90-handrail
- 93-stile end
- 94-Stringer (ladder side element)
- 711-Plastic fastener (the so-called "click")



P	G	S	E	Z
Board movement after opening	Distance between steps	Steps width	Steps length	Step thickness
[inch]	[inch]	[inch]	[inch]	[inch]
2 1/8"	9 7/8"	3 1/2"	13 1/4"	7/8"

LWT	LWT								[inch]	
	H Ceiling height	A Width ceiling opening dimensions	B Length ceiling opening dimensions	K Folded ladder height	R Projection	C Landing space	T Frame height	WxL Outside frame dimensions	MxN Internal box dimension	
	[inch]	[inch]	[inch]	[inch]	[inch]	[inch]	[inch]	[inch]	[inch]	
22½"x47"	75" - 8'11"	22½"	47"	12½"	65½"	58"	8½"	22"x46½"	20½"x44"	
25"x47"		25"	47"		72"	65"		24½"x46"	23"x44½"	
22½"x54"		22½"	54"					22"x53½"	20½"x51½"	
25"x54"	78" - 10'1"	25"	54"	12½"	72"	65"	8½"	24½"x53½"	23"x51½"	
30"x54"		30"	54"					29½"x53½"	28"x51½"	

Warning! The present drawing is for informational-demonstrative purposes only and as such cannot constitute a basis for performance. All dimensions presented in this drawing should be verified on site. Because of the fact that the drawing is a schematic one, FAKRO shall not assume any responsibility for the actual installation quality. This drawing is FAKRO's property and cannot be published or used publicly without our written consent.





Technical drawing:  
The LWT Attic Ladder

FORMAT:  
LETTER

SCALE:  
1:20/1:10

DATE:  
04.2026