

DWK DWT

ES

INSTRUCCIONES DE INSTALACIÓN

Puerta de registro termoaislante para pared bajo buhardilla

FR

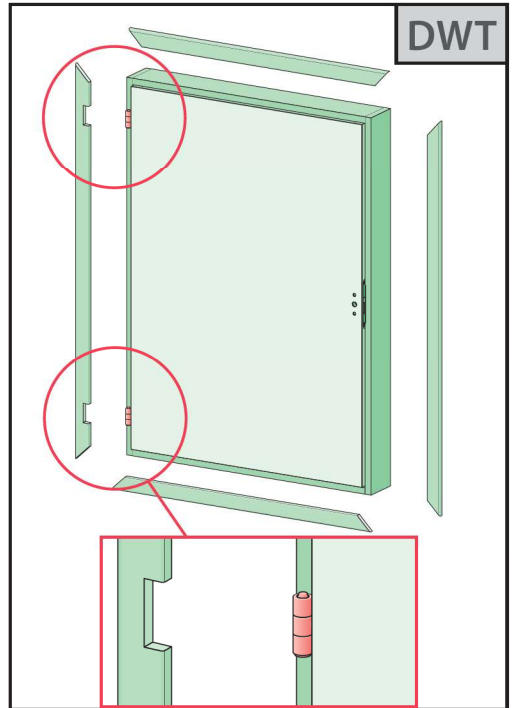
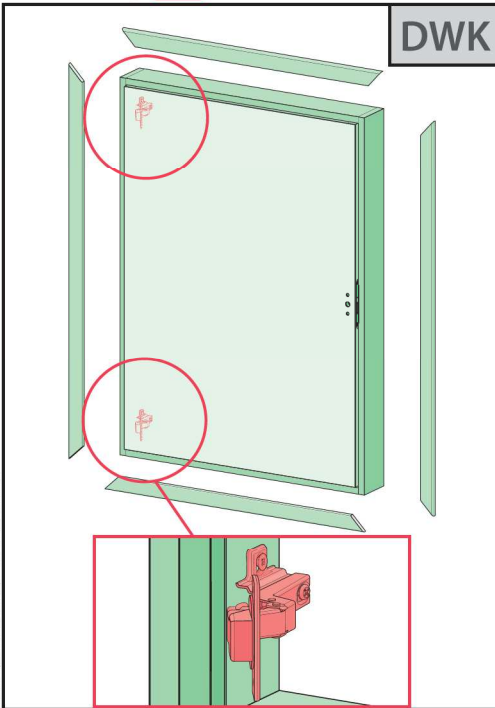
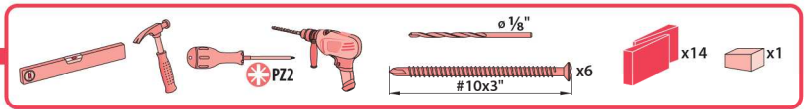
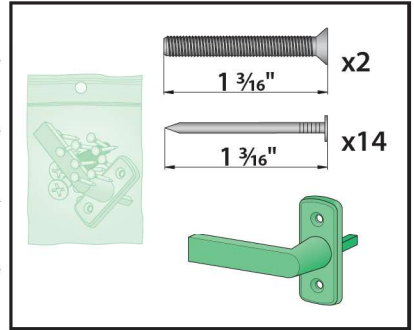
INSTRUCTION D'INSTALLATION

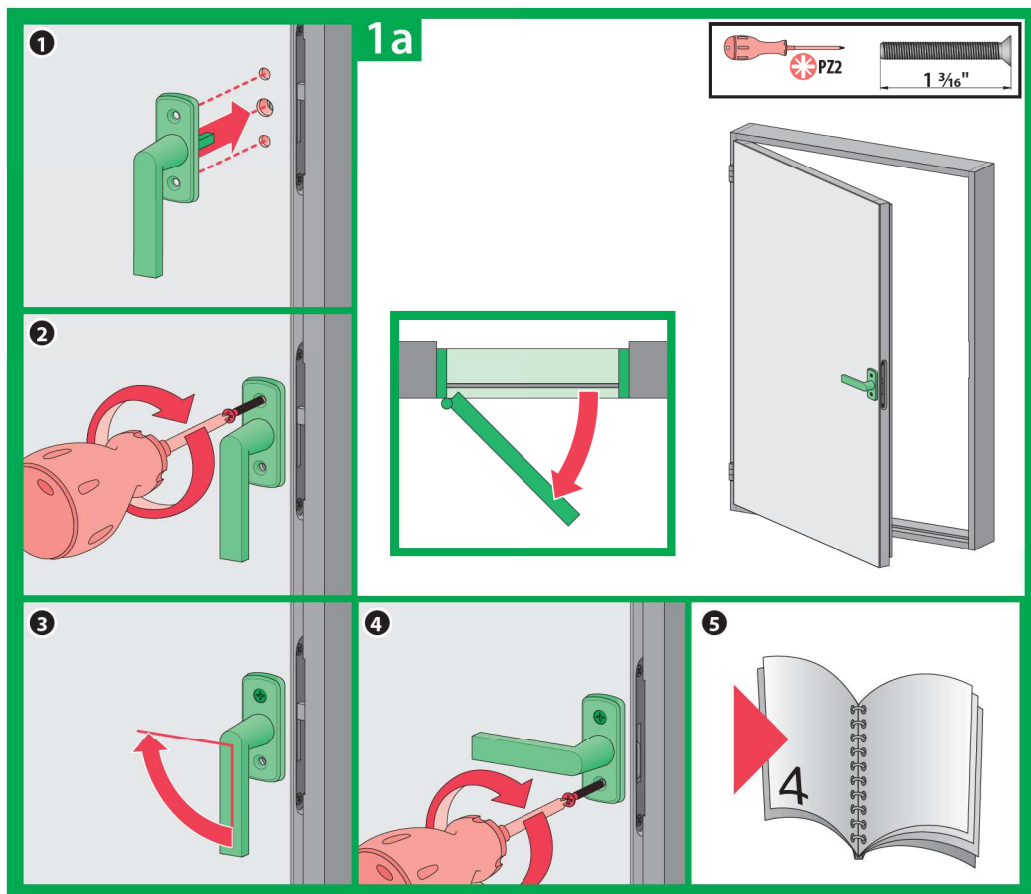
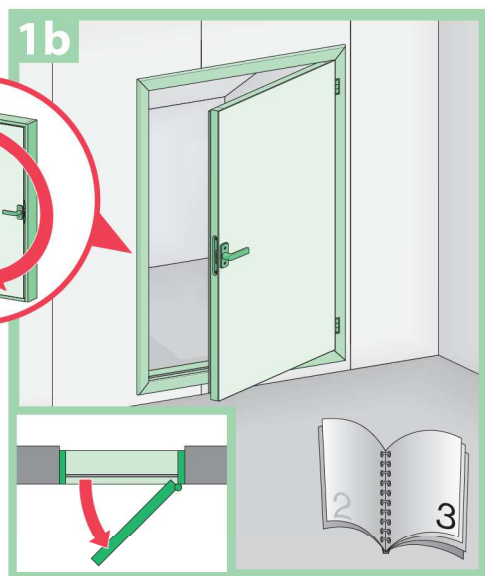
Portillon de comble thermo-isolant

US

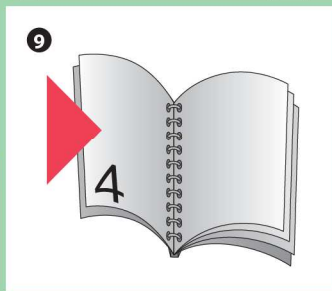
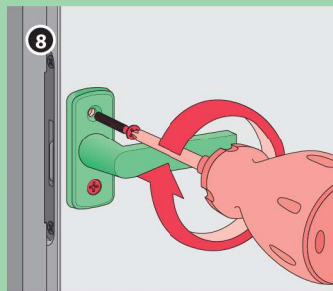
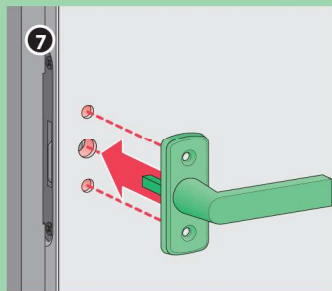
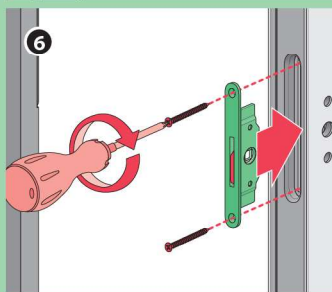
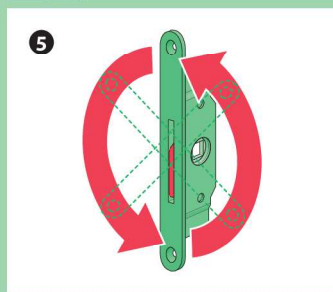
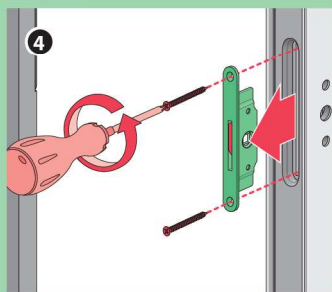
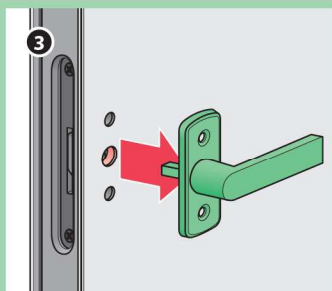
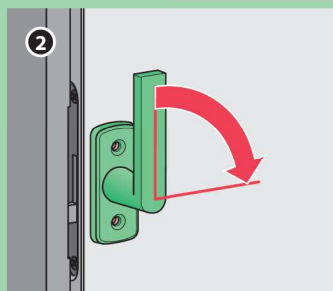
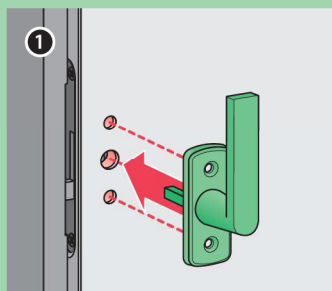
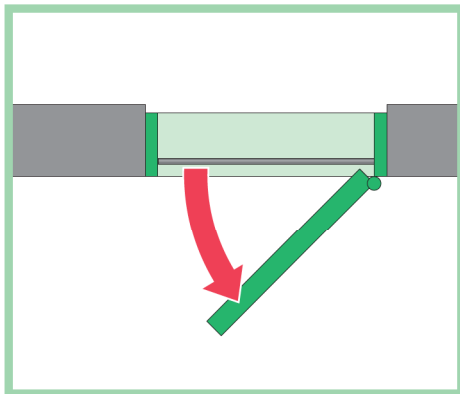
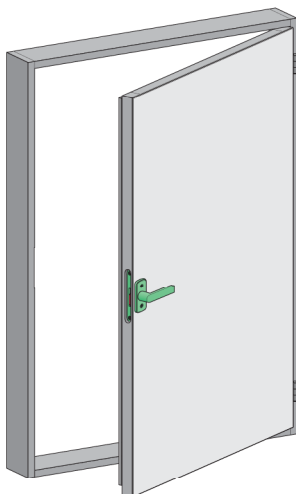
INSTALLATION INSTRUCTIONS

Insulated Knee Wall Access Door





1b



2

The diagram shows a window unit being installed into a wall. A red dashed line outlines the unit's footprint. A vertical red double-headed arrow labeled 'B' indicates the height of the unit. A horizontal red double-headed arrow labeled 'A' indicates the width of the unit. The unit is shown in a perspective view, with the interior space visible.

DW_
A" x B"

NR. ART.
869600

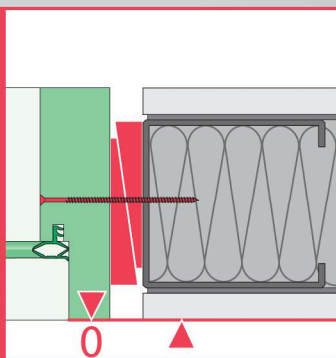
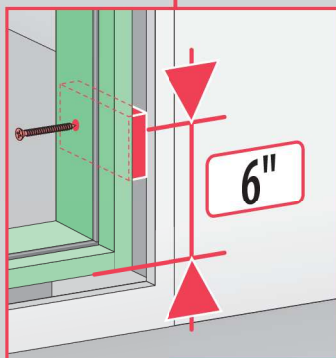
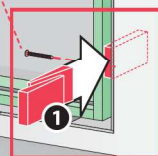
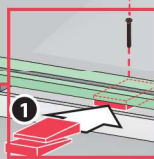
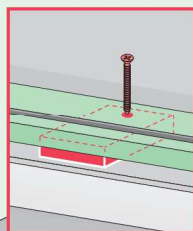
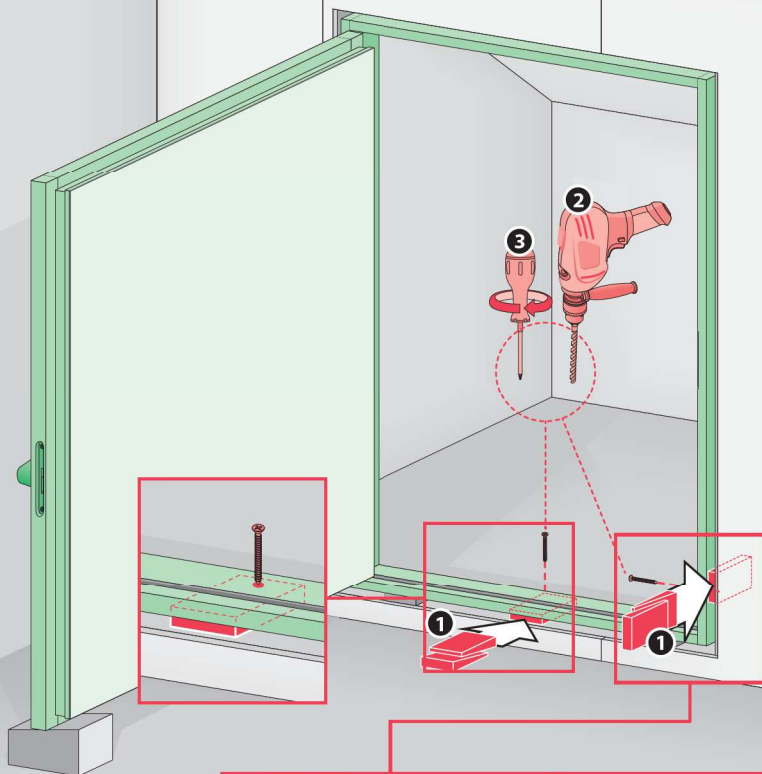
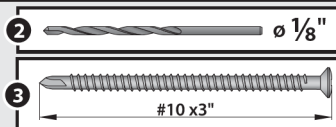
Info: www.fakrousa.com
www.fakro.ca

~ lbs W = "

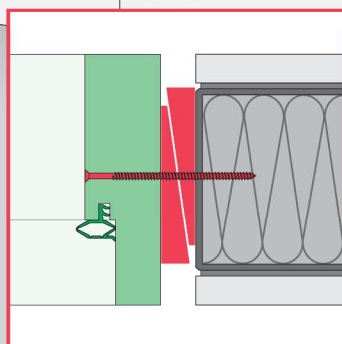
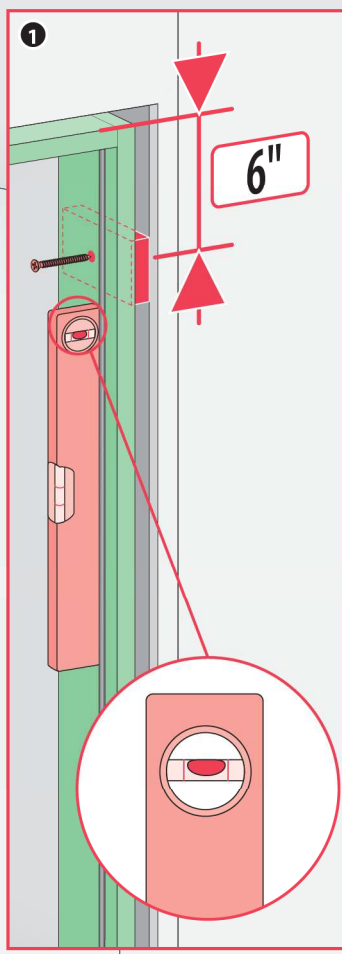
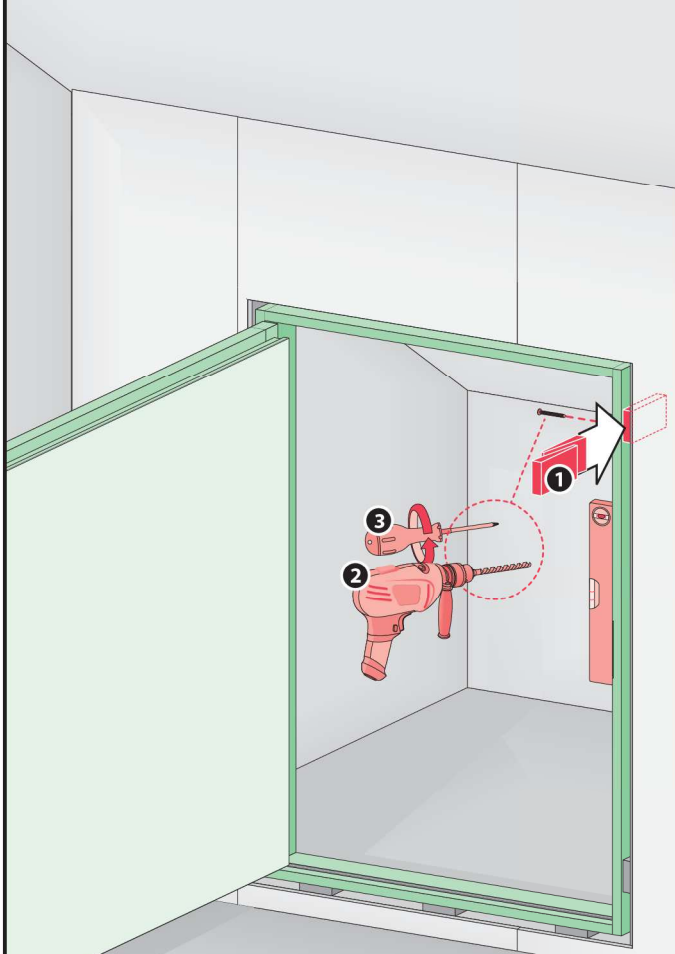
~ m³ L = "



3b



3c



4a

4b

1

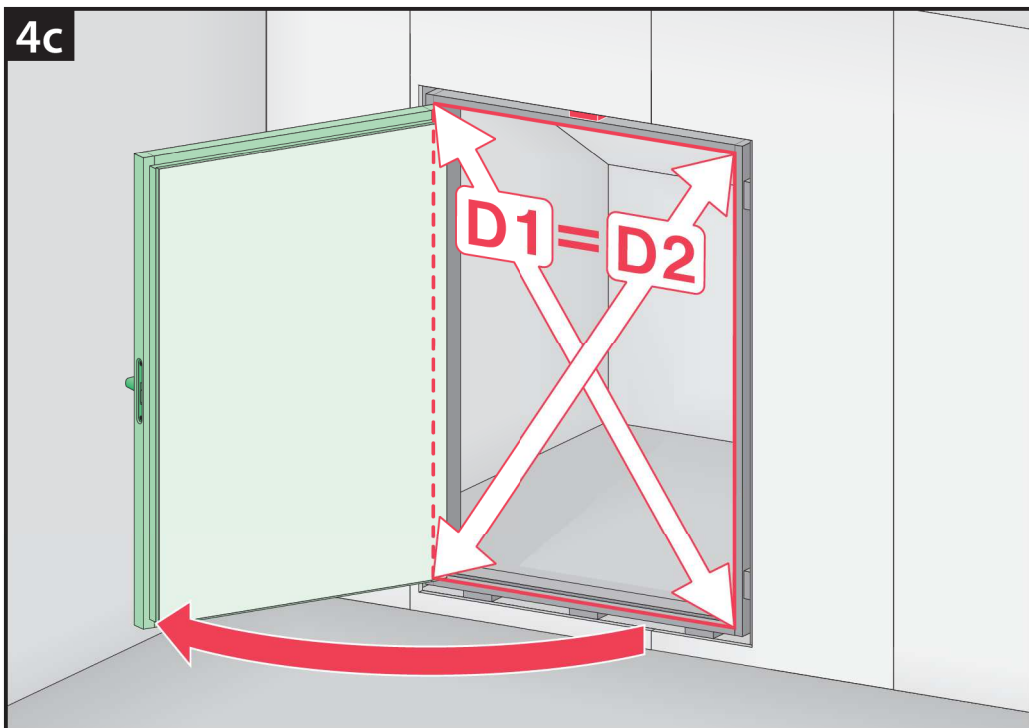
D1 = D2

0

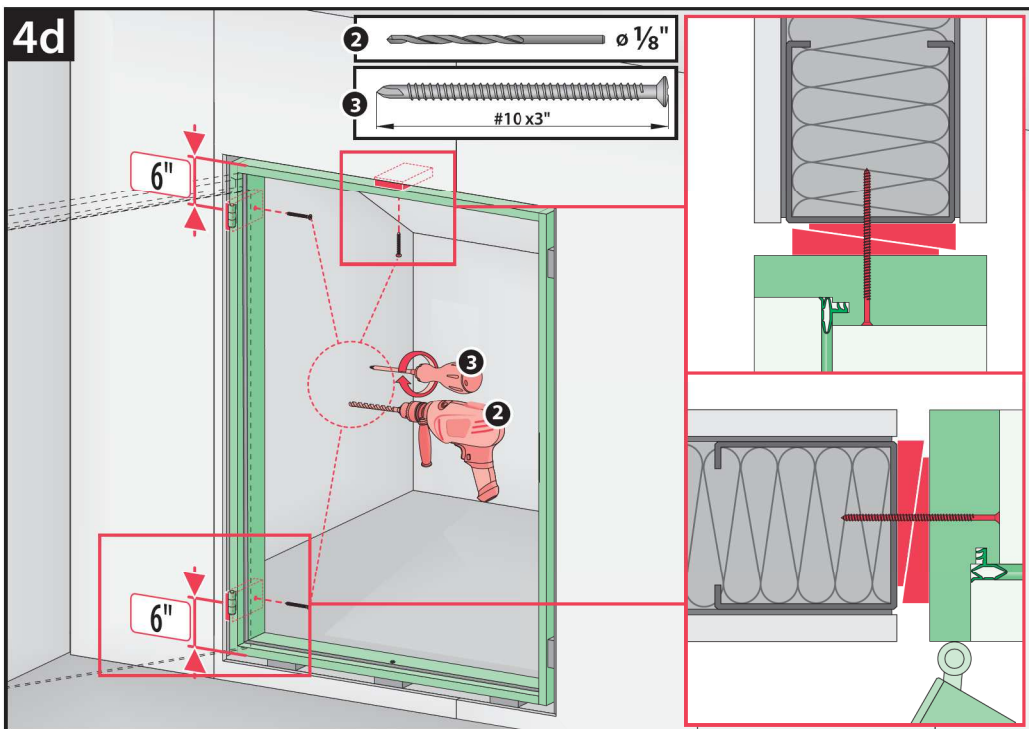
1

0

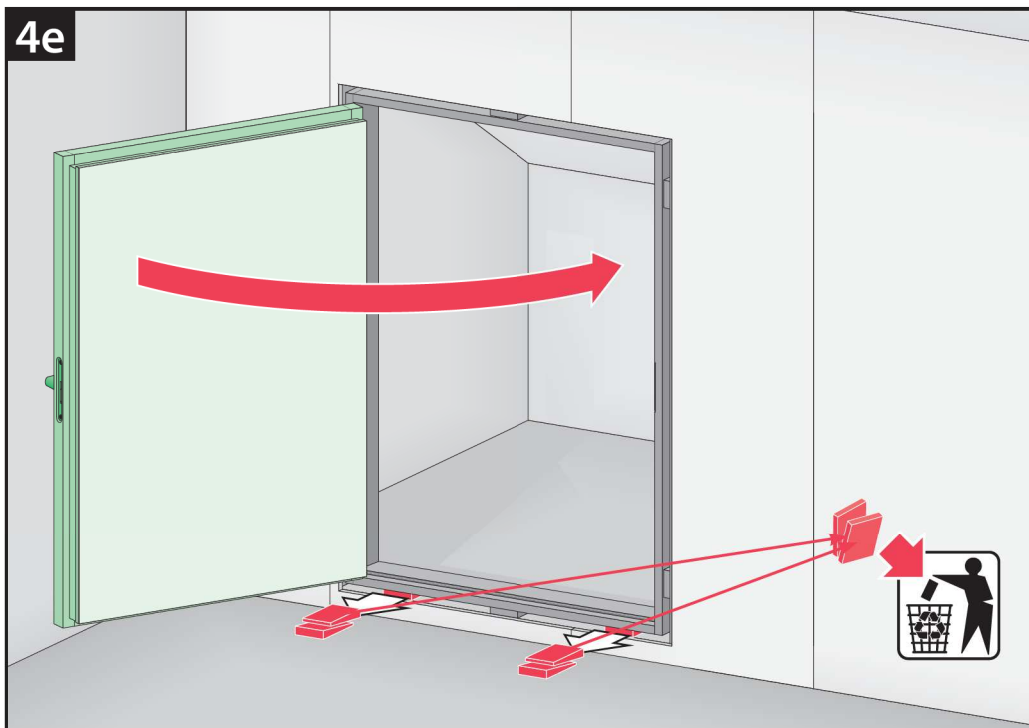
4c



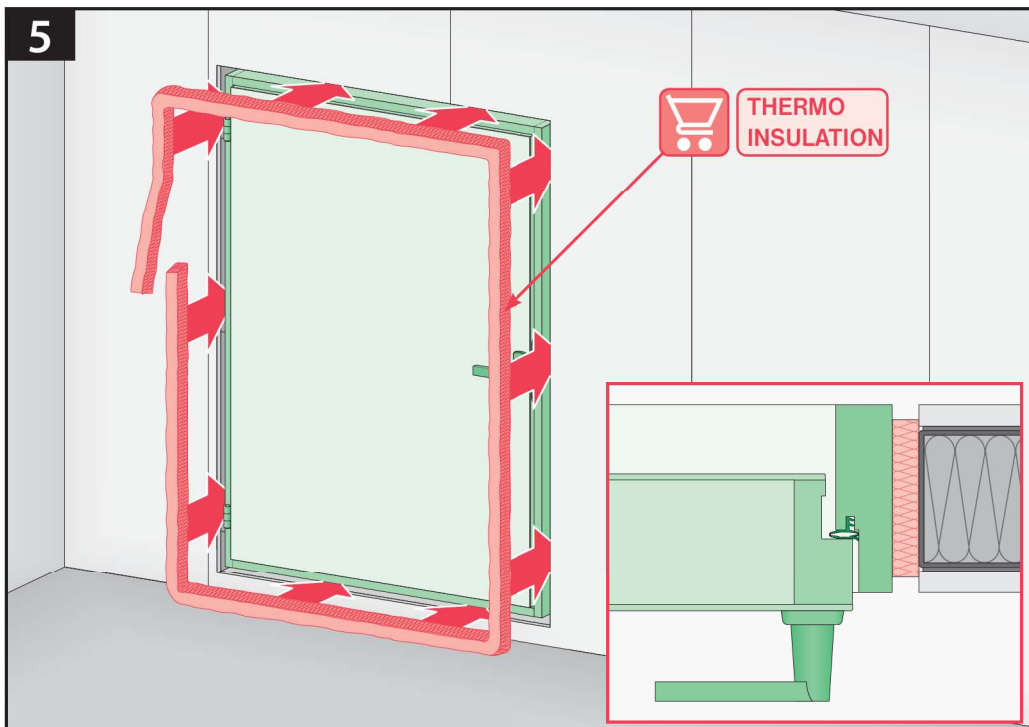
4d



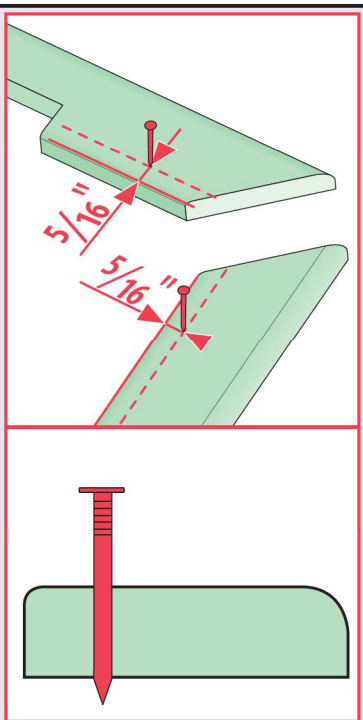
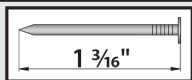
4e



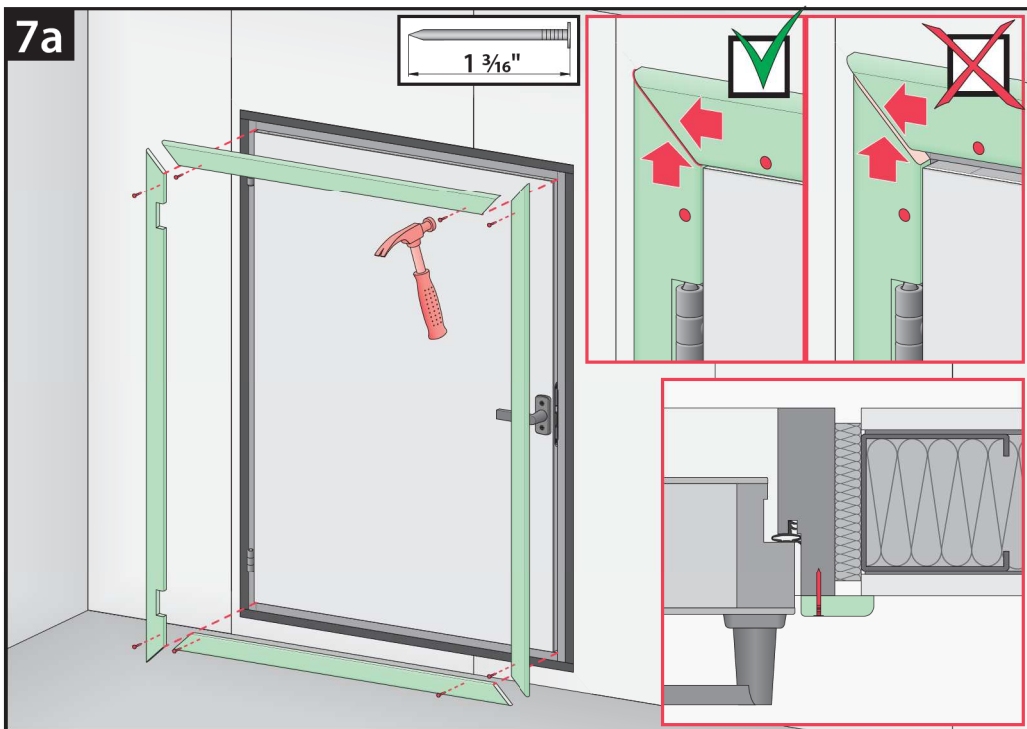
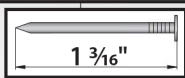
5



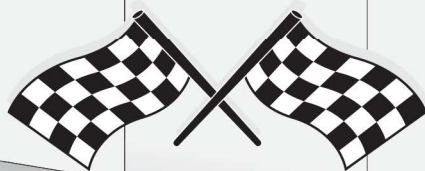
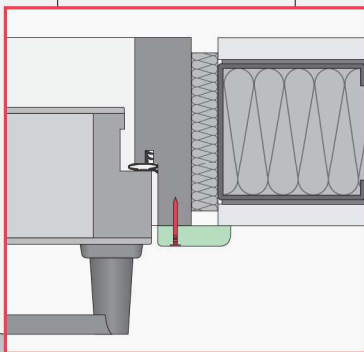
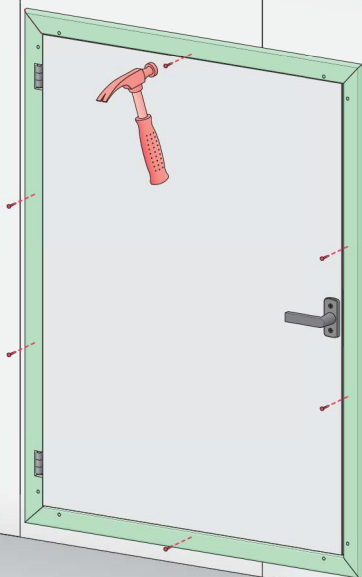
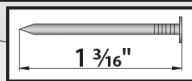
6

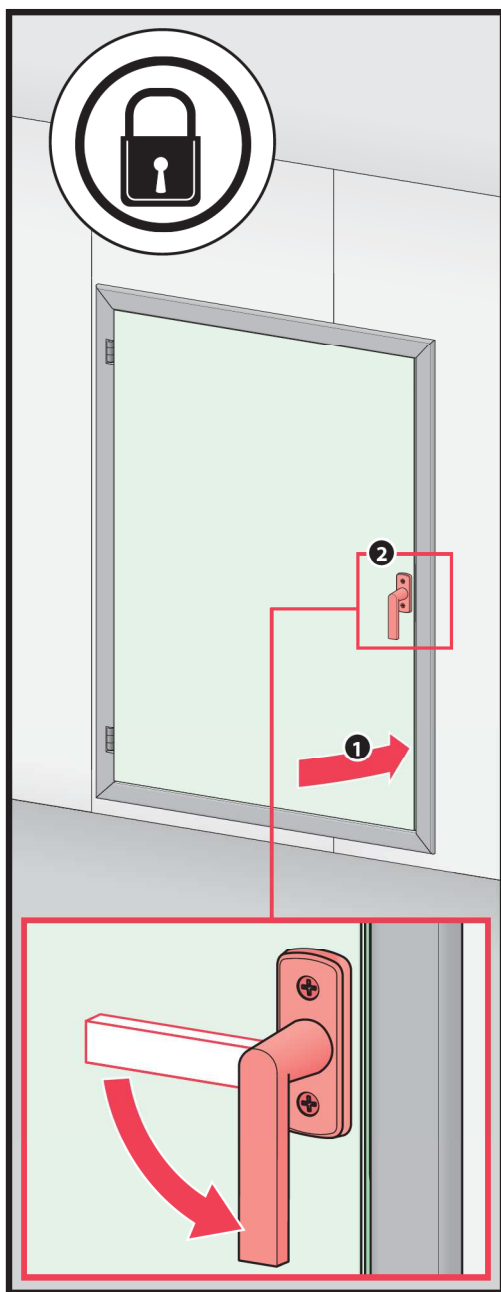
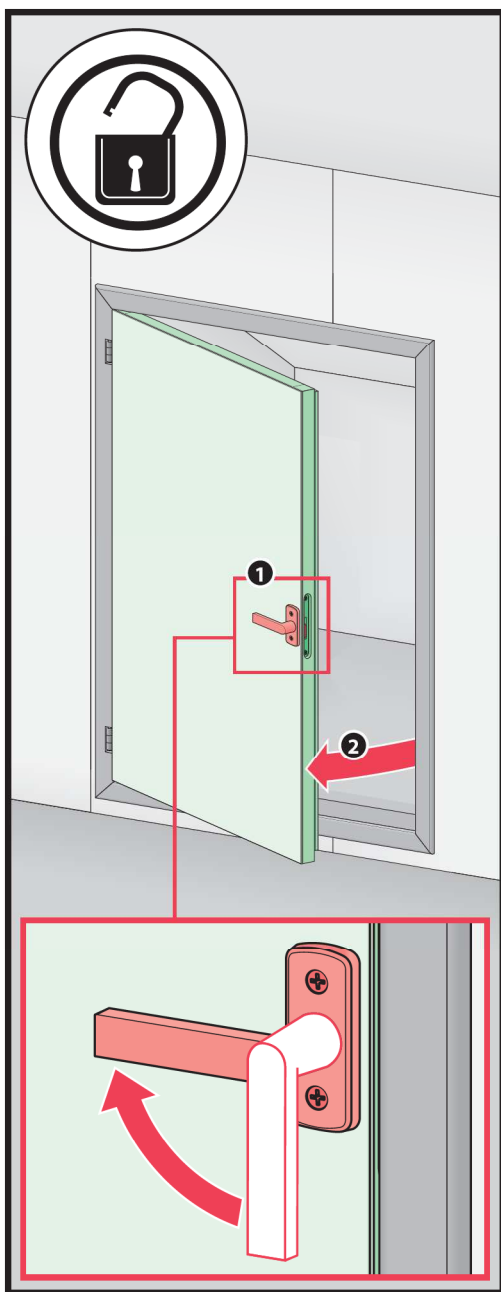


7a



7b





ES El fabricante y el vendedor no tienen ninguna responsabilidad por el incumplimiento de la ley vigente, normas de construcción y exigencias de seguridad por parte del usuario del producto, arquitecto, instalador o el propietario del edificio.

FR Le fabricant et le revendeur ne prend aucune responsabilité de ne pas respecter les lois applicables, les règlements sur les bâtiments et les exigences de sécurité par l'utilisateur du produit, l'architecte, l'installateur ou le propriétaire du bâtiment.

US Manufacturer and Seller shall bear no liability for failure to comply with the applicable laws, building codes and safety requirements by the user of the product, architect, fitter or owner of the building.